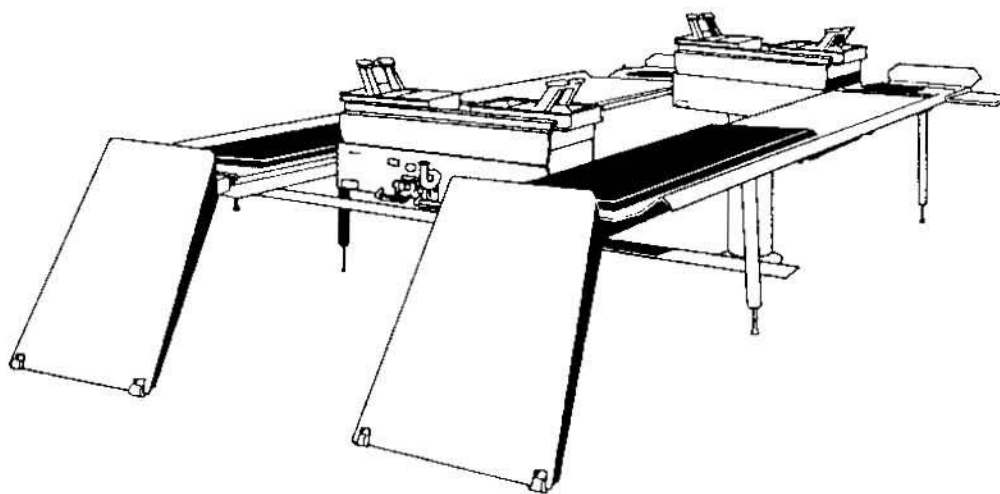




MODEL 770/772 Rack

Parts Reference



770 LIFT AND OPTIONAL REAR SLIP PLATES PARTS LIST

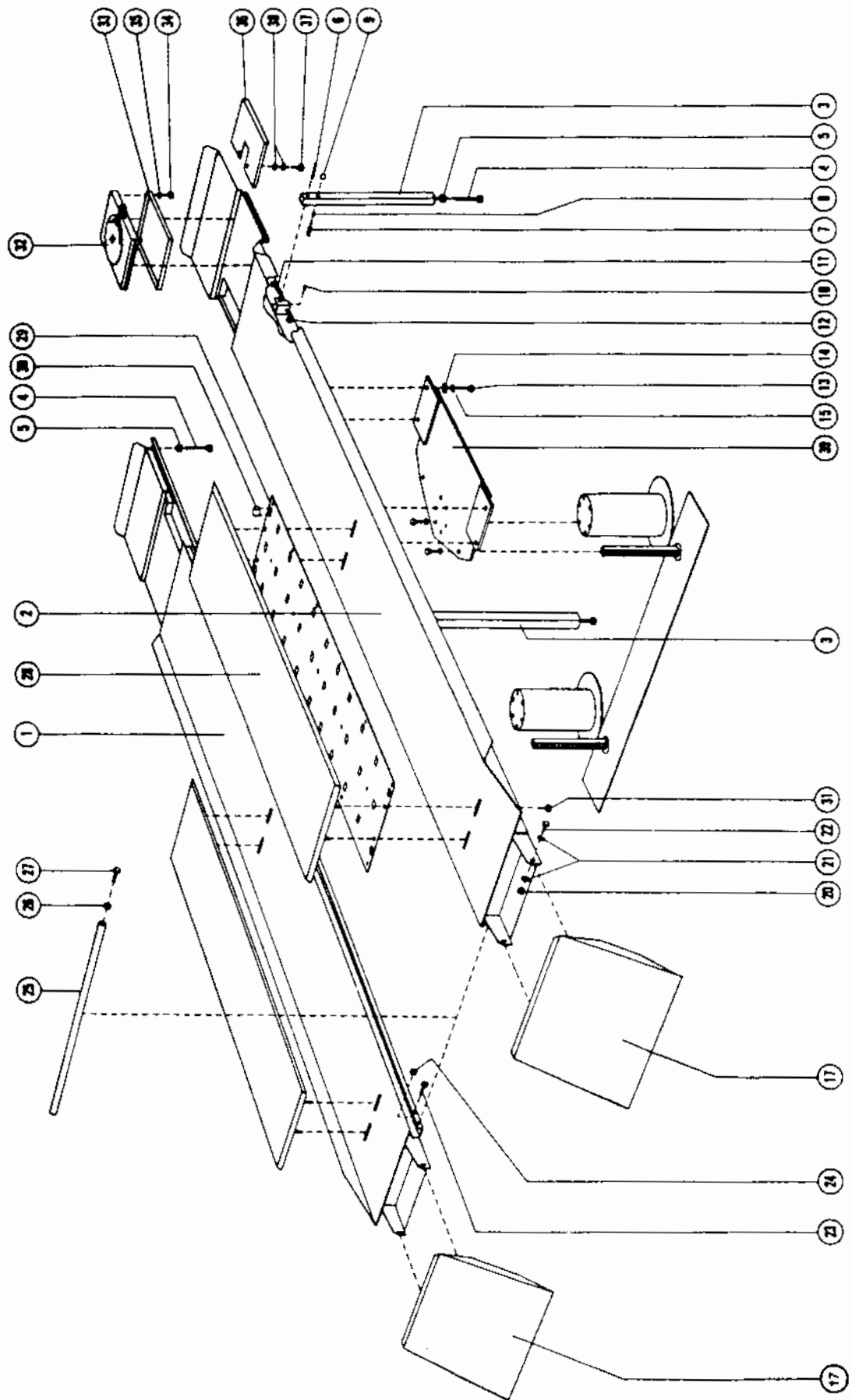
<u>REF.</u>	<u>PART NO</u>	<u>DESCRIPTION</u>
1	68478	LH Runway Weldment
2	68477	RH Runway Weldment
3	68290	Leg Weldment (4 ea.)
4	N/D	Screw 7/8-9x10.0" (8 ea.)
5	1121557	Hex Nut 7/8-9 (8ea.)
6	59420	Leg Pivot Shaft (4 ea.)
7	68294	Leg Lock Pin (4 ea.)
8	58073	Leg Lock Pin Spring (4 ea.)
9	8026380	Ball (4 ea.)
10	1103461	Setscrew 5/16-18
11	1100043	Hex Hd Screw 3/8-16 x 1-1/4"
12	1121509	Hex Nut 3/8 - 16
13	1100073	Hex Hd Screw 3/4-10 x 2-1/2"
14	59683	Special Washer
15	1100248	3/4" Lockwasher
17	69634	Ramp Weldment (2ea.)
#	69628	Ramp Extension (2ea.)
20	1120242	ESNA Nut 1/2-13
21	1100257	1/2" Flat Washer
22	1100064	Hex Head Screw 1/2 - 13 x 1-1/2"
**23	1100054	Hex Head Screw 1/2 - 13 x 1.0"
**24	1121511	Hex Nut 1/2 - 13
25	68295	Tie Bar
26	1121511	1/2-13 Hex Nut
27	1100064	Hex Head Screw 1/2-13 x 1-1/2"
*28	68298	Rear Slip Plate Weldment (2 ea.)
*29	68301	Roller Retainer (2 ea.)
*30	68302	Roller (64 ea.)
32	Model 72	Turntable Shipment
*33	68307	Turntable Spacer (2 ea.)
*34	1100804	Screw 1/4-20 x 1/2"
*35	1100241	1/4" Lockwasher
36	68481	Front Step (2ea.)
#	68412	Non-Skid Strip (2ea.)
37	1102345	Allen Hd Screw 1/4-20 x 1.0"
38	1121507	Hex Nut 1/4 - 20
39	Spec. Order ---	Bolster (to match hoist cyl.)
#	1234434	Wheel Stop (4 ea.)
#	68001	Safety Instruction Label
#	68482	Capacity Label

Not Shown

* Part of 68297 (rear slip plate shipment)

** Supplied with Jack Tray or Roller Jack

Page 6



**USA**

309 Exchange Avenue
Conway, Arkansas 72032
Tel.: 1-800-362-8326 or (501) 450-1500
Fax: (501) 450-1585

GERMANY

Westerwaldstrasse 36
D-35722 Herborn
Tel: 02772-51098
Fax: 02772-52144

CANADA

2844 Slough Street
Mississauga, Ontario L4TL63
Tel: (905) 672-2600
Fax: (905) 672-2126

IRELAND

Sitecast Industrial Estate
Little Island, Cork
Tel: 021 354477
Fax: 021 354530

FRANCE

Z.I. Du Haut Galy
93602 Aulnay S/S Bois
Tel: 1/4865-3828
Fax: 1/4865-7331

SOUTHEAST ASIA

149 Gul Circle
Singapore 9161
Tel: 65/861-3011
Fax: 65/862-0527

Notice: The information contained in this document is subject to change without notice. **John Bean Company** makes no warranty with regard to this material. **John Bean Company** shall not be liable for errors contained herein or for incidental consequential damages in connection with furnishings, performance, or use of this material.

This document contains proprietary information which is protected by copyright and patents. All rights are reserved. No part of this document may be photocopied, reproduced, or translated without prior written consent of **John Bean Company**.

John BEAN is a registered trademark of the John Bean Company and Snap-on Corporation.